

# ORECK<sup>®</sup> XL<sup>®</sup>

S I M P L Y   A M A Z I N G<sup>®</sup>

## Service Parts List

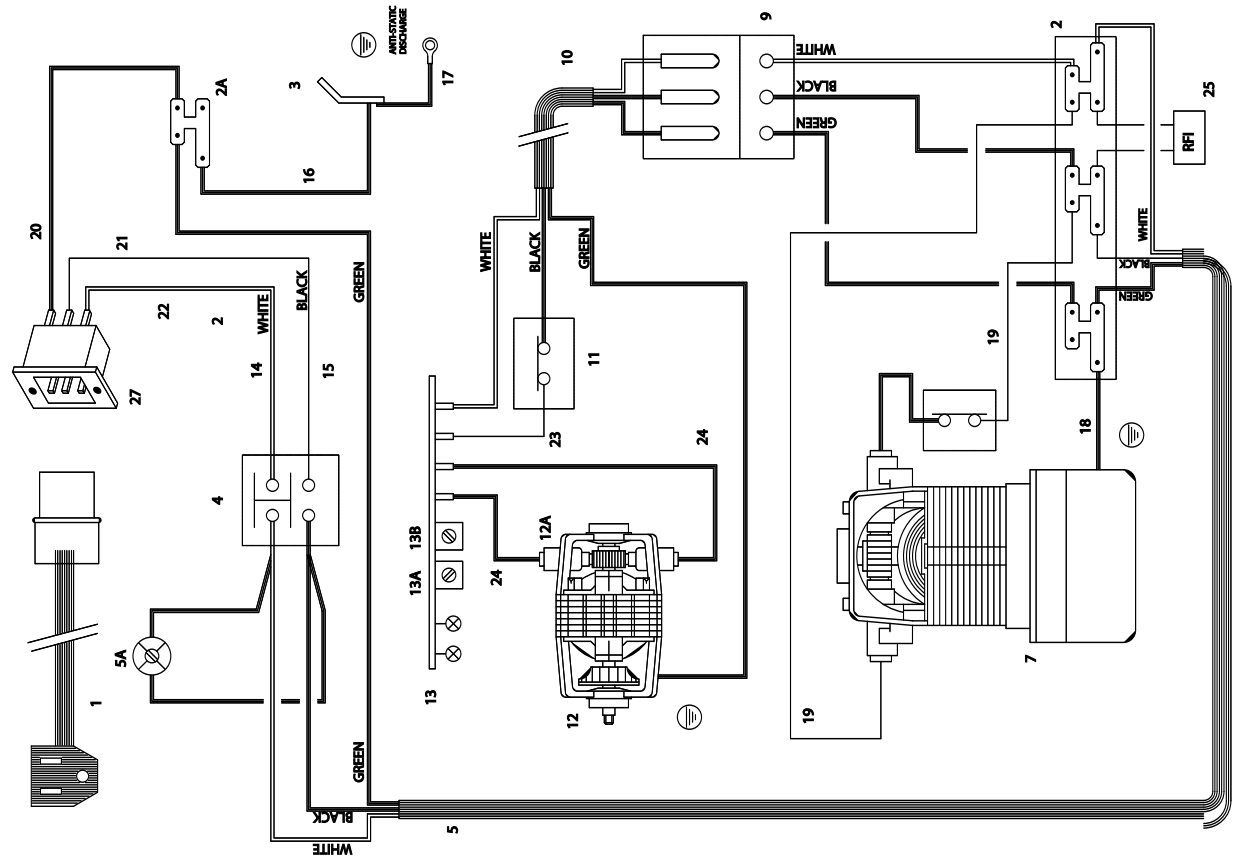


**Commercial  
Upright Vacuum  
Cleaner**

**UPRO14T**

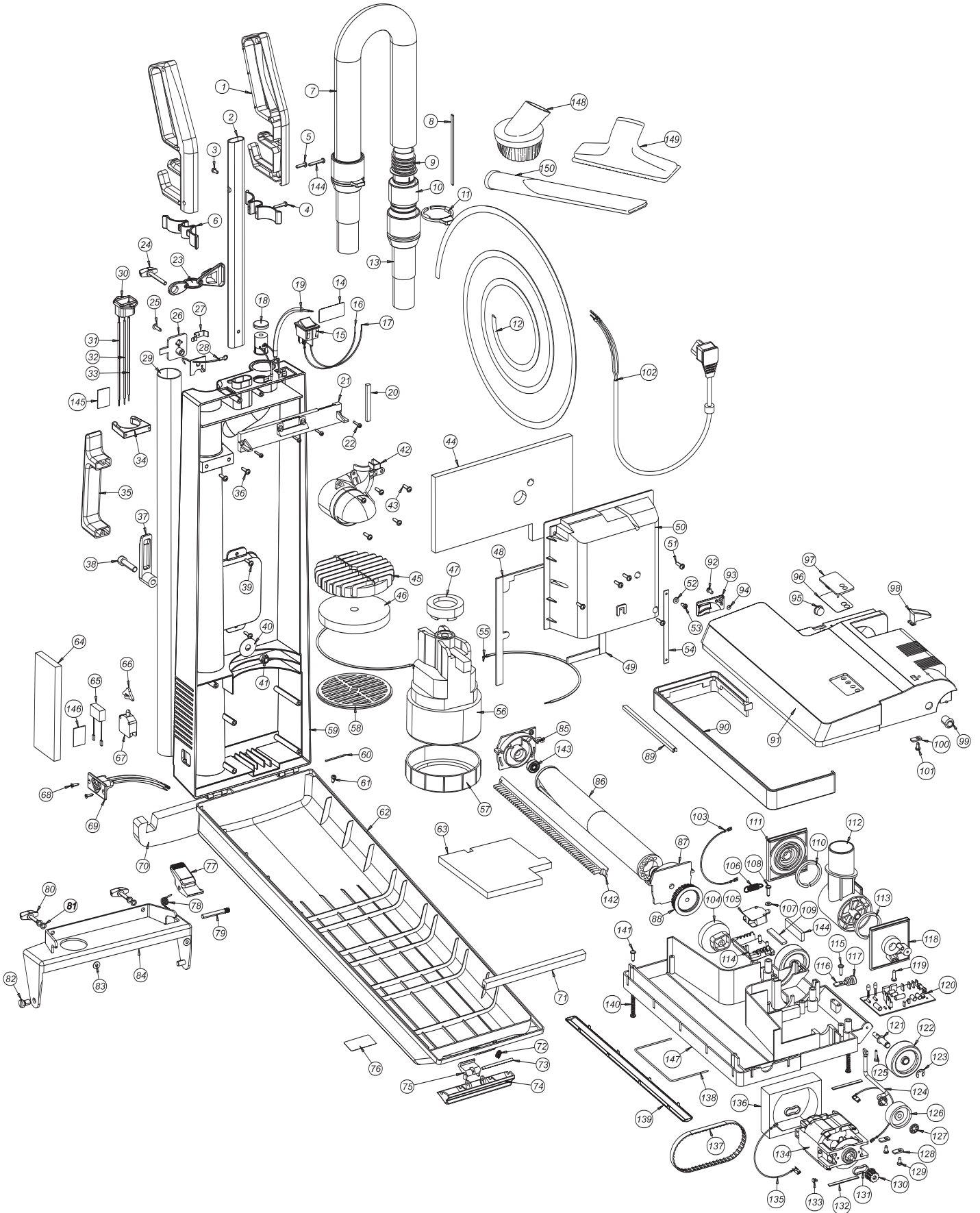
REV D. Please disregard all previous versions.

# WIRING DIAGRAM UPRO14T



#	DESCRIPTION	PART #	QTY.
1	LINE CORD 50 FT W/CONNECTOR RED	03-0026-200	1
2	CONNECTION BRACKET 3-POLE	04-0030-03	1
2A	CONNECTION BRACKET 1-POLE	04-0030-01	1
3	ANTI STATIC DISCHARGE	04-0045-0	1
4	MAIN SWITCH GREEN LIGHT	04-0009-30	1
5	MAIN WIRE 120 / 230V NEW MODEL	04-0082-110	1
7	VACUUM MOTOR 950W	5-05-0082-41	1
9	SOCKET OUTLET 3-POLE W/WIRES	04-0068-740	1
10	CABLE 3-POLE WITH PLUG	16-0133-74	1
11	SWITCH NORMALLY CLOSED	16-0099-0	1
12	BRUSH MOTOR COMPLETE	5-16-0128-5	1
12A	CARBON BRUSH W. SPRING	16-0129-2	2
13	ELECTRONIC BOARD	16-0130-5	1
14	WIRE WHITE 220 MM F/F CSA	04-0082-40	1
15	WIRE BLACK 220 MM F/F CSA	04-0082-30	1
16	WIRE GREEN 190 MM F/VER CSA	04-0082-50	1
17	WIRE BLACK 50 MM R/VER CSA	04-0045-9	1
18	WIRE GREEN 200 MM PL/PL CSA	04-0082-8	1
19	WIRE BLACK 200 MM PL/PL CSA	04-0082-9	2
20	WIRE GREEN 100 MM F/F CSA	04-0082-7	1
23	WIRE BLACK 150 MM F/F CSA	16-0082-6	1
24	WIRE YELLOW 125 MM F/ST CSA	16-0072-21	2
25	SUPPRESSOR RFI W/TERM HOOVER	05-0077-2	1
26	MOTOR WIRE CSA	04-0072-6	2
27	INLET 3-POLE CLICK	75-0002-8	1
5A	ADJUSTMENT VACUUM LAMP CLOCKWISE	HIGHER VACUUM LOWER VACUUM	
13A	ADJUSTMENT RED LED SENSOR OF RESISTANCE CLOCKWISE	LOWER RESISTANCE BRUSH-ROLLER LOWER RESISTANCE BRUSH-ROLLER	
13B	ADJUSTMENT BLOCKING POWER CLOCKWISE	HIGHER RESISTANCE BRUSH-ROLLER LOWER AMPERAGE SETTING HIGHER AMPERAGE SETTING	

# Parts Diagram



## Part Numbers Listing: UPRO14T

#	Item	Order #	Qty.	Pk.			
1	Handle, Left & Right, Oreck	01-0006-19	1	1			
2	Tube, Oval, Aluminum	01-0012-0	1	1			
3	Screw, 4 x 10	KOR00-0002-7M	1	100			
4	Screw, 4 x 20	KOR00-0002-9M	1	100			
5	Screw, 4 x 16, Flange Head	KOR00-0002-3M	1	100			
6	Tool Holder	01-0011-0	2	1			
7	Hose, Stretch, Black, 50cm x 32mm	02-0024-1	1	1			
	Complete Hose Assembly	S-02-1541-2	1	1			
8	Seal, Hose Coupling, 115 x 5 x 2	KOR02-0027-2Q	2	25			
9	Hose End	02-0028-0	2	1			
10	Hose Coupling w/o Seal, Black	02-0027-1	2	1			
11	Hose Clip w/Lip, Black	KOR02-0025-1Q	2	25			
12	Tube, Vacuum Indicator	04-0007-0	1	1			
13	Hose Cuff, 32mm Black	02-0026-32	2	1			
14	Metal Warning Sticker, Electric Shock	06-0189-5	1	1			
15	Switch, 4P, Light Green	04-0009-30	1	1			
16	Wire, Black, 1mm <sup>2</sup> 220mm, F/F, CSA	04-0082-30	1	1			
17	Wire, White, 1mm <sup>2</sup> 220mm, F/F, CSA	04-0082-40	1	1			
18	Top Indicator Paper Bag Full	04-0011-0	1	1			
19	Main Wire 120/230Volt, CSA New	04-0082-110	1	1			
20	Gasket, 6 x 5mm, Neopene, Sealed	00-0087-1	1	1			
21	Electric Cover	04-0021-0	1	1			
22	Screw, 3.5 x 16	KOR00-0002-0M	2	100			
23	Cable Restraint Assembly	S-03-0178-0Q	1	25			
24	Thumb Screw, 5 x 40	KOR04-0103-0Q	1	25			
25	Screw, 4 x 16, Flange Head	KOR00-0002-3M	1	100			
26	Anti-static Cover	04-0036-0	1	1			
27	Anti-static Discharge	04-0045-0	1	1			
28	Anti-static Wire 50mm R/VER CSA	04-0045-9	1	1			
29	Telescoping Wand	02-0001-8-63	2	1			
30	Inlet, 3 Pole, Click C6/C9	75-0002-8	1	1			
31	Wire, White, 1mm <sup>2</sup> 220MM F/F CSA	04-0082-40	1	1			
32	Wire, Black, 1mm <sup>2</sup> 220MM F/F CSA	04-0082-30	1	1			
33	Wire, Green/Yellow 100mm F/F CSA	04-0082-7	1	1			
34	Wand Locker, Yellow	04-0042-8	2	1			
35	Rear Body Handle	04-0043-0	1	1			
36	Screw, 4 x 16, Flange Head	KOR00-0002-3M	4	100			
37	Cable Hook, External, Black	22-0301-0	1	1			
38	Screw, Hexaon, M8 x 30	KOR61-0107-1M	1	100			
39	Screw, 4 x 16, Flange Head	KOR00-0002-3M	2	100			
40	Washer, Plain, M8 x 30	KOR61-0107-3M	1	100			
41	Nut, Nylon, M8	KOR61-0107-2M	1	100			
42	Paper Bag Mount Assembly	S-04-0153-0	1	1			
43	Screw, 4 x 16, Flange Head	KOR00-0002-3M	4	100			
44	Foam, Motor	04-0066-0	1	1			
45	Inlet Filter Cover	04-0058-0	1	1			

## Part Numbers Listing: UPRO14T continued

#	Item	Order #	Qty.	Pk.			
46	Motor Filter, Round	40336-01	1	1			
47	Motor Mounting Block	05-0089-0	1	1			
48	Gasket, Motor Housing 1	04-0087-1	1	1			
49	Gasket, Motor Housing 2	04-0087-2	1	1			
50	Motor Housing	S-04-0086-0	1	1			
51	Screw, 4 x 16, Flange Head	KOR00-0002-3M	4	100			
52	Washer, Plain, M4, Steel	KOR00-0095-0M	1	100			
53	Screw, 3 x 8	KOR00-0002-41M	1	100			
54	Door Restraint	04-0063-0	1	1			
55	Wire, Blue, 1mm <sup>2</sup> 200mm, PL/PL, CSA	04-0082-9	1	1			
56	Motor	S-05-0082-41	1	1			
57	Top MotorMount	05-0065-0	1	1			
58	Motor Grill	04-0064-0	1	1			
59	Rear Body Assembly, Oreck, Gray	P-04-0052-39	1	1			
60	Door Hinge Shaft	04-0088-0	2	1			
61	Screw, 3 x 8	KOR00-0002-41M	1	100			
62	Front Door, Oreck, Gray	P-06-0871-39	1	1			
63	Foam, Motor Vacuum	04-0053-0	1	1			
64	Filter Laminated, Motor Exhaust	04-0055-0	1	1			
65	Supr. RFI Hoov with Terminals	05-0077-2	1	1			
66	Switch Acuator, Yellow	04-0074-8	1	1			
67	Switch, Normally Open	04-0076-0	1	1			
68	Screw, 3.5 x 13	KOR00-0002-42M	2	100			
69	3 Pole Model, CSA, PL/PL/PL	04-0068-740	1	1			
70	Bump, Celrubber, EPDM, Black	06-0063-0	1	1			
71	Inside Door Seal	06-0061-1	1	1			
72	Spring, Door Opener	06-0056-0	1	1			
73	Shaft, Locker Cover	06-0055-0	1	1			
74	Door Opener, Red	06-0028-19	1	1			
75	Door Locker	06-0057-0	1	1			
76	Sticker, Front Door, Oreck Logo	06-0189-3725	1	1			
77	Locking Pedal, Yellow	11-0069-8	1	1			
78	Spring, E17 x 123	KOR11-0150-0M	1	1			
79	Shaft Pedal	11-0070-0	1	1			
80	Thumb Screw, 5 x 20, Black	KOR11-0103-0Q	2	25			
81	Lockwasher, Nordlock, M5 Double	KOR00-0097-1M	2	100			
82	Screw, Short, Left Side	KOR11-0078-0Q	2	25			
83	Fiber Ring, 11 x 4.5 x 1	KOR11-0104-0M	2	100			
84	Bracket	11-0753-0	1	1			
85	Roller Support, Right, Open	17-0122-0	1	1			
86	Brush Roll	40341-01	1	1			
87	Roller Support, Left, Closed	17-0107-0	1	1			
88	Brush Driver	17-0106-0	1	1			
89	Gasket, 6 x 5 mm, Neoprene Sealed	00-0087-1	1	1			
90	Bumper, Oreck, Light Gray	12-0144-390	1	1			
91	Brush Cover, Red	P-12-0088-19	1	1			
92	Screw, 4 x 10	KOR00-0002-7M	1	100			

## Part Numbers Listing: UPRO14T continued

#	Item	Order #	Qty.	Pk.			
93	Brush Strip Access	12-0116-0	1	1			
94	Washer, Fiber, 6.5 x .5	KOR00-0090-0M	1	100			
95	Bearing, Bus Short	12-0099-0	1	1			
96	Decal, LED Standard, Oreck	12-0073-3	1	1			
97	LED Cover	12-0083-0	1	1			
98	Latch Break	12-0096-0	1	1			
99	Bearing, Bus Long	12-0098-0	1	1			
100	Front Caster Shaft Fixing Plate	14-0104-0	1	1			
101	Screw, 4 x 10	KOR00-0002-7M	1	100			
102	50' Power Cord	03-0026-200	1	1			
103	Wire, Blue 1mm <sup>2</sup> 150mm, F/F, CSA	16-0082-6	1	1			
104	Front Caster Adjustment Knob w/ Print	S-14-0141-0	1	1			
105	Switch, Normally Closed	16-0099-0	1	1			
106	Spring, T21 x 76	KOR14-0139-0Q	1	25			
107	Washer, Plain, M4 Steel	KOR00-0095-0M	1	100			
108	Screw, 4 x 10	KOR00-0002-7M	1	100			
109	Felt, Switch Housing, 50 x 8 x 4	14-0116-1	1	1			
110	Felt Guiding Plate	13-0101-0	1	1			
111	Swivel Guiding Plate w/ Felt	S-13-0105-1	1	1			
112	Swivel Neck, 32mm	13-0102-1	1	1			
113	Felt Guiding Plate	13-0101-0	1	1			
114	Switch Housing w/o Felt	14-0114-0	1	1			
115	Screw, 4 x 16, Flange Head	KOR00-0002-3M	1	100			
116	Front Castor Shaft Fixing Plate	14-0104-0	1	1			
117	Screw, 3.5 x 25	KOR00-0002-2M	1	100			
118	Swivel Giding Plate w/Felt NW	S-13-0105-3	1	1			
119	Screw, 4 x 16, Flange Head	KOR00-0002-3M	1	100			
120	Electronic Board, CSA, 120V, 3 Amp	16-0130-5	1	1			
121	Rear Caster Shaft, Stainless	14-0137-4	2	1			
122	Rear Caster	14-0136-0	2	1			
123	Circlip, 7mm	KOR14-0136-3M	2	100			
124	Front Castor Shaft	14-1401-0	1	1			
125	Screw, 4 x 16, Flange Head	KOR00-0002-3M	1	100			
126	Front Castor (RTP) Version 2	14-0138-2	2	1			
127	Starlock, 6mm	KOR14-1401-5M	2	100			
128	Front Castor Shaft Fixing Plate	14-0104-0	2	1			
129	Screw, 4 x 10	KOR00-0002-7M	2	100			
130	Belt Driver, Brush Motor	16-0123-0	1	1			
131	Rubber Ring, Brush Motor	16-0125-0	1	1			
132	Gasket, Brush Motor	16-0121-0	1	1			
133	Clip, Thermo Fuse	16-0165-0	1	1			
134	Brush, Motor	S-16-0128-5	1	1			
135	Wire	16-0072-21	1	1			
136	Foam, Brush Motor	16-0126-0	1	1			
137	Belt	40332-01	1	1			
138	Brush Protector Wire	14-0146-0	1	1			
139	Brush Protector, Channel	14-0145-0	1	1			

## Part Numbers Listing: UPRO14T continued

#	Item	Order #	Qty.	Pk.			
140	Screw, 5 x 40	KOR00-0002-5M	2	100			
141	Screw, 4 x 16, Flange	KOR00-0002-3M	1	100			
142	Brush Strip, Black Nylon	KOR-17-0117-0	1	10			
143	Ball Bearing, 626zz	17-0108-0	1	1			
144	Felt, Brush Housing, 49 x 14 x 4	14-0116-0	1	1			
145	Connection Bracket, 1P	04-0030-01	1	1			
146	Connection Bracket, 3P	04-0030-03	1	1			
147	Brush Housing, Oreck, Red	14-0148-19	1	1			
148	Dusting Brush	40333-01	1	1			
149	Fabric Brush	40334-01	1	1			
150	Crevice Tool	40335-01	1	1			
	Filter Bags <i>(Not Shown)</i>	PK10PRO14DW	1	10			
	Manual, Owner's <i>(Not Shown)</i>	40337-02	1	1			
	Cardboard, 587mm x 370mm <i>(Not Shown)</i>	18-0011-0	1	1			
	Cardboard, 653mm x 460mm <i>(Not Shown)</i>	18-0012-0	1	1			
	Cardboard, 445mm x 660mm <i>(Not Shown)</i>	18-0013-0	1	1			
	Pilloflex, 600mm x 250mm <i>(Not Shown)</i>	18-0016-0	1	1			
	Polybag <i>(Not Shown)</i>	18-0062-0	1	1			
	Carton <i>(Not Shown)</i>	18-0002-0	1	1			

## Service Information

- Component configuration on exploded view may differ in case of specific versions. However, the actual components are distinguished by means of item and part numbers.
- If a repair has been made, make sure that all functions of the appliance are working correctly.
- Spare parts have been standardized as much as possible and the part may not be the exact replacement part.

